

Current part is item (2) on diagram. Available at [www.oshkoshequipment.com](http://www.oshkoshequipment.com)

(1) FIG. NO.	(2) ITEM NO.	(3) SMR CODE	(3) NATIONAL STOCK NUMBER	(4) PART NUMBER	(5) FSCM	(6) DESCRIPTION	(7) U/M	(8) INC IN UNIT
USABLE ON CODE								
GROUP 20-HOIST,WINCH,CAPSTAN,WINDLASS, POWER CONTROL UNIT AND POWER TAKE-OFF								
2001-HOIST,CAPSTAN,WINDLASS OR WINCH ASSEMBLY								
265	1	PAOZZ	5305-00-727-5677	MS90726-162	96906	SCREW,CAP,HEXAGON HEAD: TO ATTACH GUARD	EA	6
265	2	PAOZZ	5310-00-820-6653	MS35338-50	96906	WASHER,LOCK: TO ATTACH GUARD	EA	6
265	3	PAOZZ	2540-00-753-8715	7538715	19207	GUARD: DRUM SHAFT CABLE,FRONT WINCH	EA	2
265	4	PAOFF	2590-00-753-8687	7538687	19207	WINCH,DRUM,VEHICLE MOUNTING: FRONT ASSEMBLY	EA	1
266	4	PAOZZ	4730-00-278-3357	103881	92679	PLUG,PIPE: OIL FILLER,DRAIN AND LEVEL	EA	2
266	5	PAOZZ	5305-00-715-1194	MS51981-80	96906	SETSCREW: OIL FILLER AND DRAIN	EA	2
266	17		5315-00-736-8685	7368685	19207	PIN,STRAIGHT,HEADLESS: DRIVE SHAFT TO END YOKE	EA	1
266	18		5315-00-753-8333	MS24665-145	96906	PIN,COTTER: DRIVE SHAFT SHEAR PIN	EA	2
266	41	PAOZZ		133870	21450	BOLT: GEAR CASE ASSEMBLY	EA	4
267	1	PAOZZ	5310-00-880-7744	MS51967-5	96906	NUT,PLAIN,HEXAGON: LOCK POPPET LATCH	EA	3
267	2	PAOZZ	2540-00-740-9150	7409150	19207	LATCH DRUM POPPET: FRONT WINCH ASSEMBLY	EA	1
267	3	PAOZZ	5306-00-753-8725	7538725	19207	BOLT,INTERNALLY RELIEVED: DRUM LOCK PLUNGER	EA	1
267	4	PAOZZ	5360-00-753-8706	7538706	19207	SPRING,HELICAL,COMPRESSION: DRUM LOCKING PLUNGER	EA	1
267	6	PAOZZ	4730-00-018-9566	G1251	24617	PLUG,PIPE: END PLATE (1) DRUM ASSEMBLY (1)	EA	2
267	8	PAOZZ	4730-00-278-3357	103881	92679	PLUG,PIPE: OIL FILTER,DRAIN AND LEVEL	EA	2
267	46	PAOZZ	5305-00-873-6946	7538733	19207	SETSCREW: ADJUSTING CABLE DRUM BRAKE	EA	1
267	47	PAOZZ	2590-00-179-3442	8710655	19207	SPACER,WINCH: END PLATE ASSEMBLY	EA	6
267	48	PAOZZ	5310-00-933-8123	MS35339-30	96906	WASHER,LOCK: SHOULDER BOLT	EA	6
267	49	PAOZZ	5306-00-753-8709	7538709	19207	BOLT,SHOULDER: WINCH MOUNTING	EA	6
268	1	PAOZZ	4010-00-072-0713	7038820	19207	WIRE ROPE: WINCH	EA	1
268	2	MFOZZ		796767	19207	WIRE,ROPE,STEEL (200FT) (MFD FROM WIRE ROPE, 4010-00-274-6816)	EA	1
268	3	PAOZZ	4030-00-262-3152	7071882	19207	CLEVIS: WIRE ROPE TO CHAIN ASSEMBLY	EA	1
268	4	PAOZZ	2540-00-368-5015	10944689-3	19207	CHAIN ASSEMBLY,SINGLE (4 FT)	EA	1



Current part is item (2) on diagram. Available at [www.oshkoshequipment.com](http://www.oshkoshequipment.com)

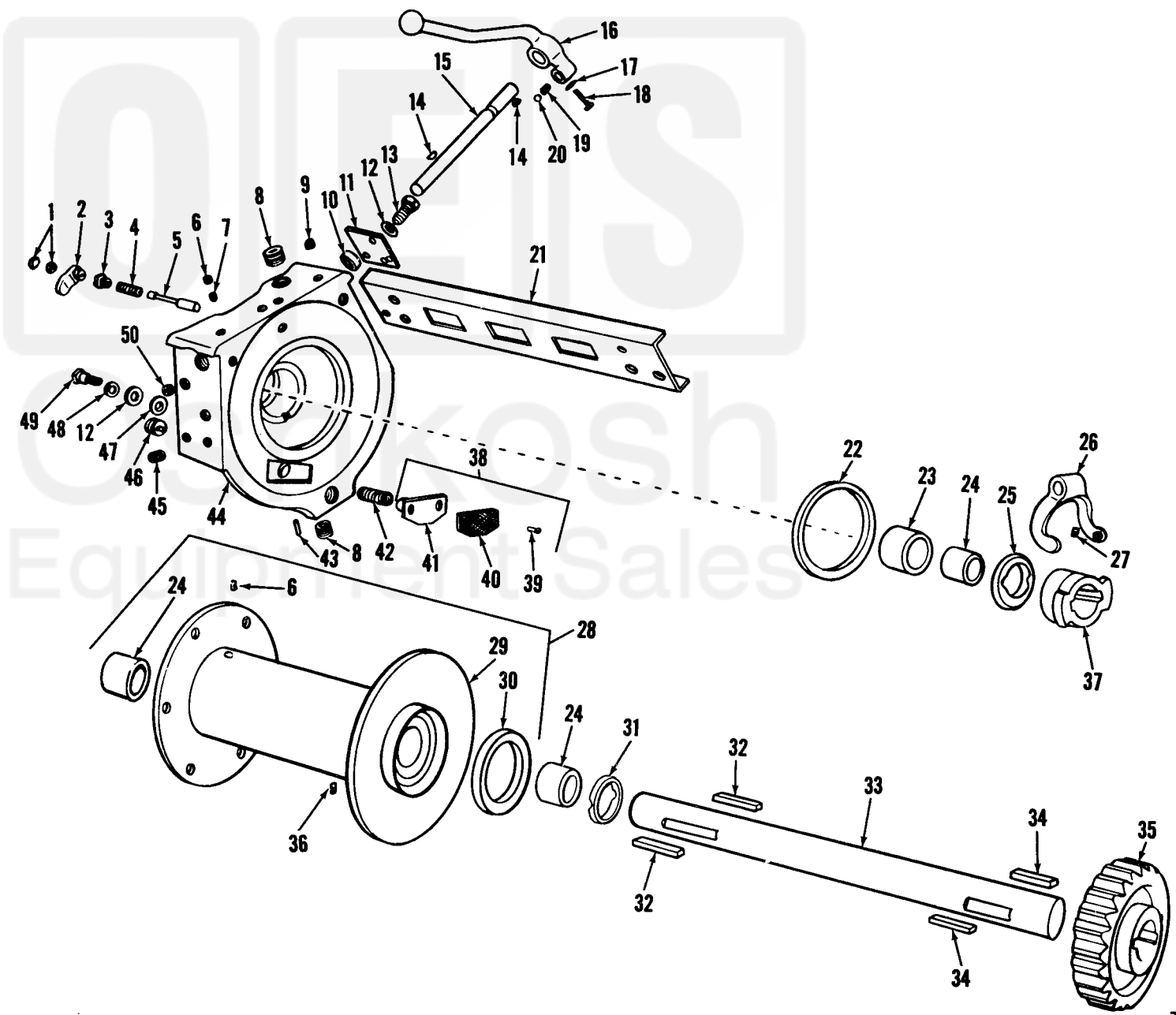


Figure 267. Front winch end plate, drum and shaft.

TA 031541

Current part is item (2) on diagram. Available at [www.oshkoshequipment.com](http://www.oshkoshequipment.com)